



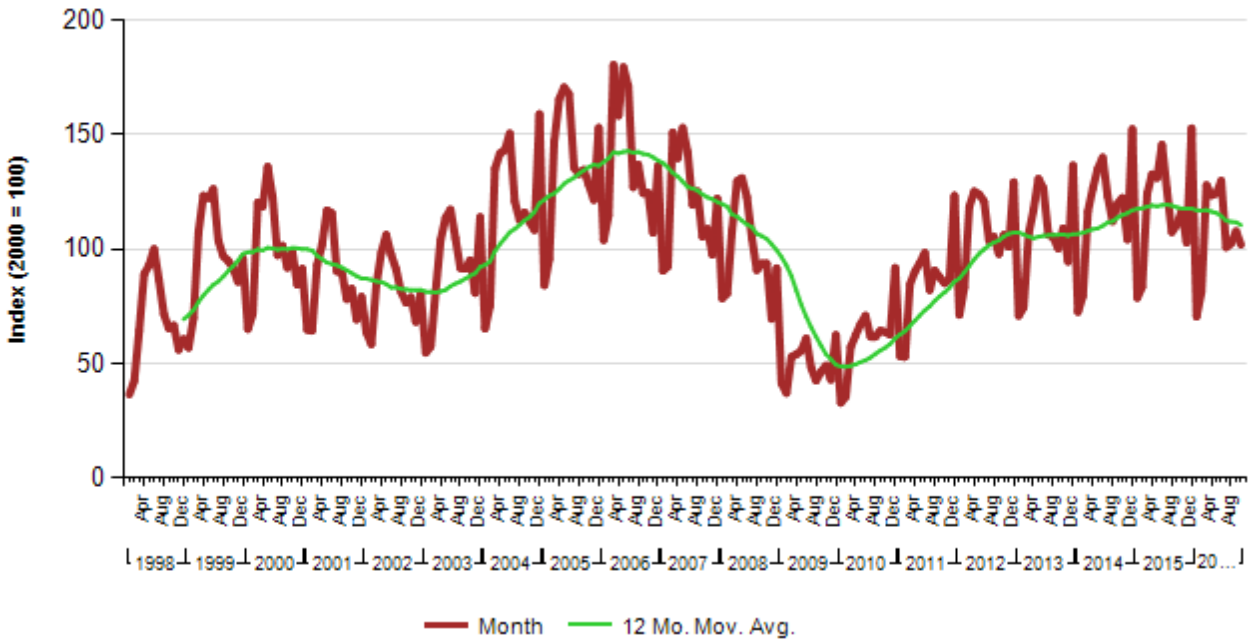
Construction Equipment - AEM Index Data Over Years

A Statistics Program Product

From the Association of Equipment Manufacturers

| | Current Value | 12 Months Ago | % Change | 1 Month Ago | % Change |
|--------------|---------------|---------------|----------|-------------|----------|
| Value Index: | 101.85 | 116.76 | -13% | 107.82 | -6% |
| Units Index: | 109.79 | 131.35 | -16% | 126.88 | -13% |

North American Construction Weighted Index through Oct 16



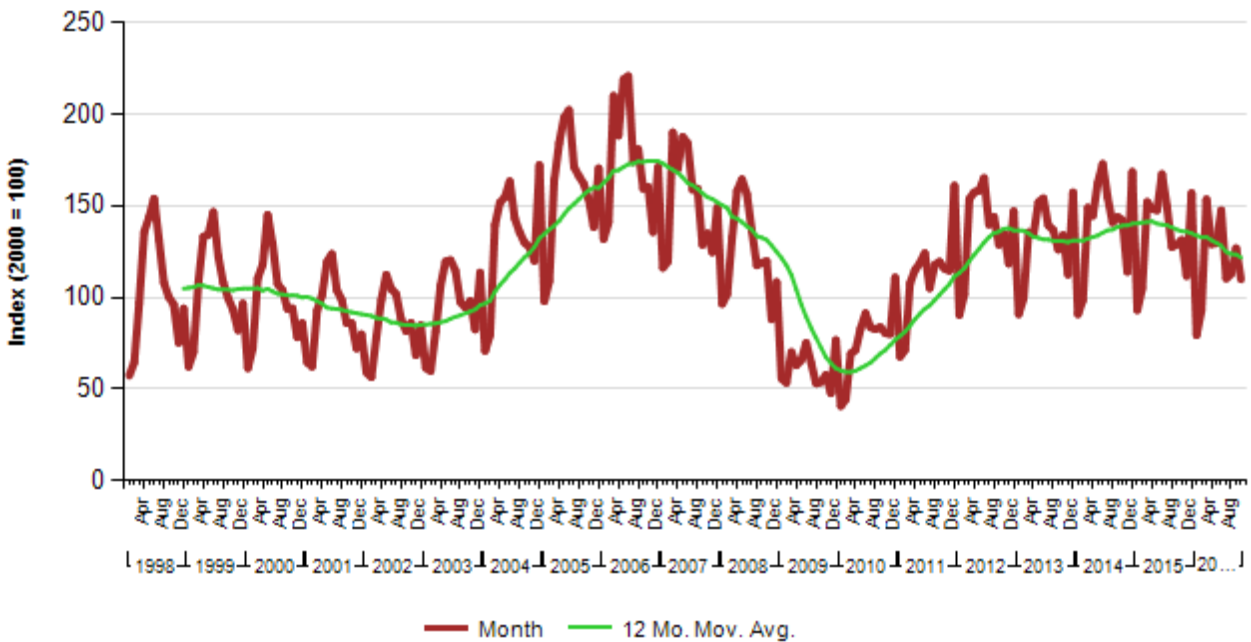


Construction Equipment - AEM Index Data Over Years

A Statistics Department Product

From the Association of Equipment Manufacturers

North American Construction Units Index through Oct 16



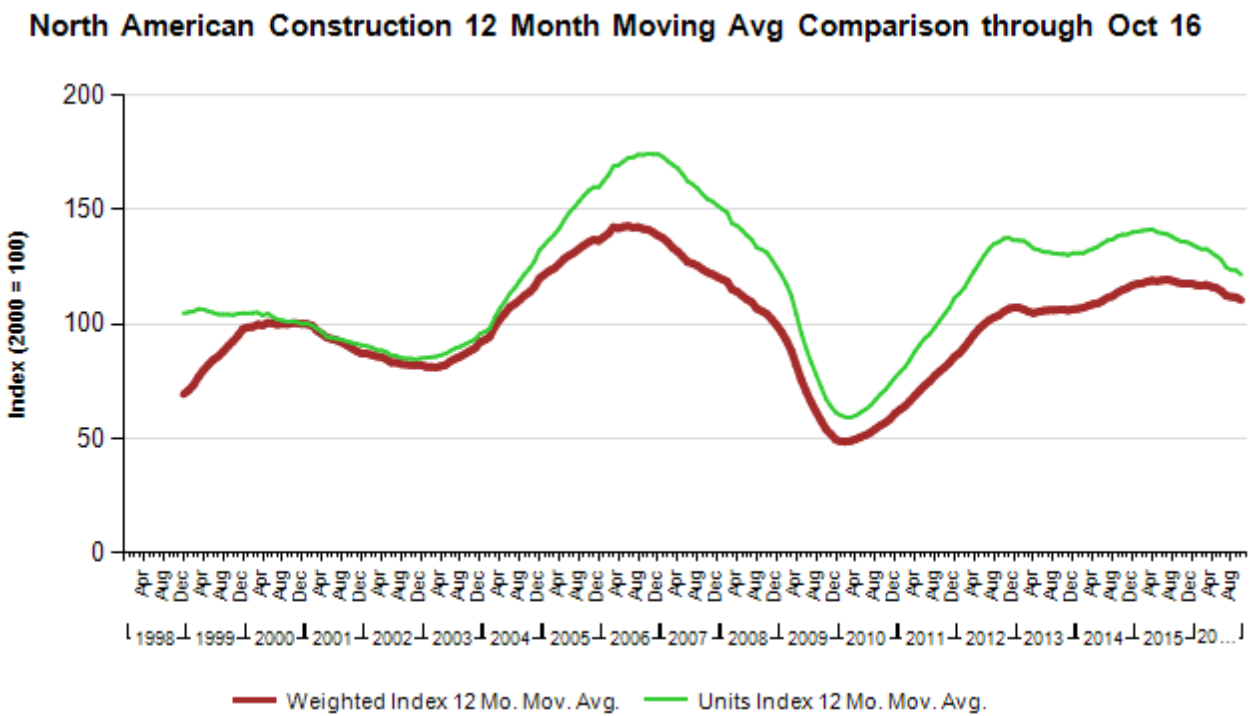
©2016, Copyright, Association of Equipment Manufacturers (AEM). All Rights Reserved. This report is for AEM member use only.



Construction Equipment - AEM Index Data Over Years

A Statistics Department Product

From the Association of Equipment Manufacturers

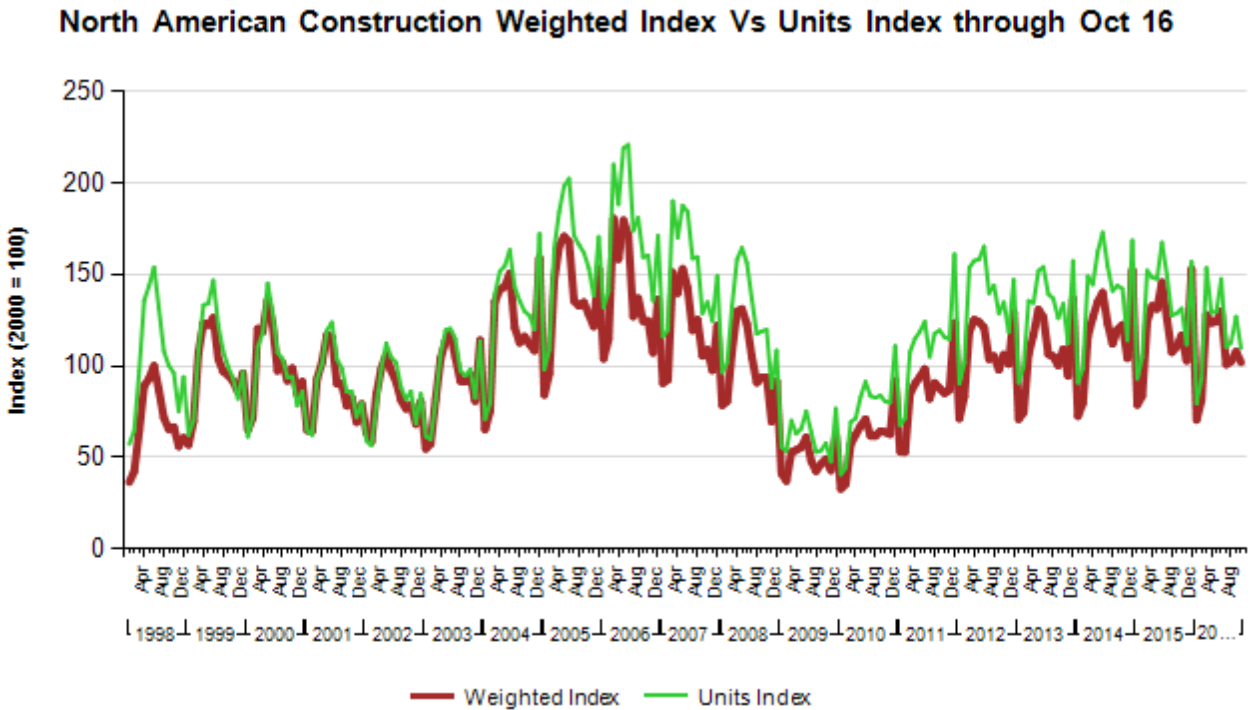




Construction Equipment - AEM Index Data Over Years

A Statistics Department Product

From the Association of Equipment Manufacturers





Construction Equipment - AEM Index Data Over Years

A Statistics Department Product

From the Association of Equipment Manufacturers

***Code and Description of the Products in the Index

| Code | Description |
|-------------|------------------------|
| CEB0 | Vib. Tandem Roller 2D |
| CEC0 | Vib. Tandem Roller 1D |
| CEE2 | Vib Single – Soil Sm |
| CEE3 | Vib. Single – Soil Pad |
| CEF0 | Combination Rollers |
| CEG0 | Pneumatic Tired Roller |
| CEK2 | Refuse – Pad/Sheep |
| EM01 | Crawler Tractors |
| EM04 | 4WD Wheel Loaders |
| EM07 | Motor Graders |
| EM08 | Rigid Frame Haulers |
| EM58 | Articulated Haulers |
| EXHC | Crawler Excavators |
| EMHW | Wheel Excavators |
| IF11 | Skid Steer Loaders |
| IF12 | Compact Track Loaders |
| IF14 | Loader Wheel Tractors |
| IF18 | Loader-Backhoes |
| RS01 | Reclaimers/Stabilizers |