

Latin America

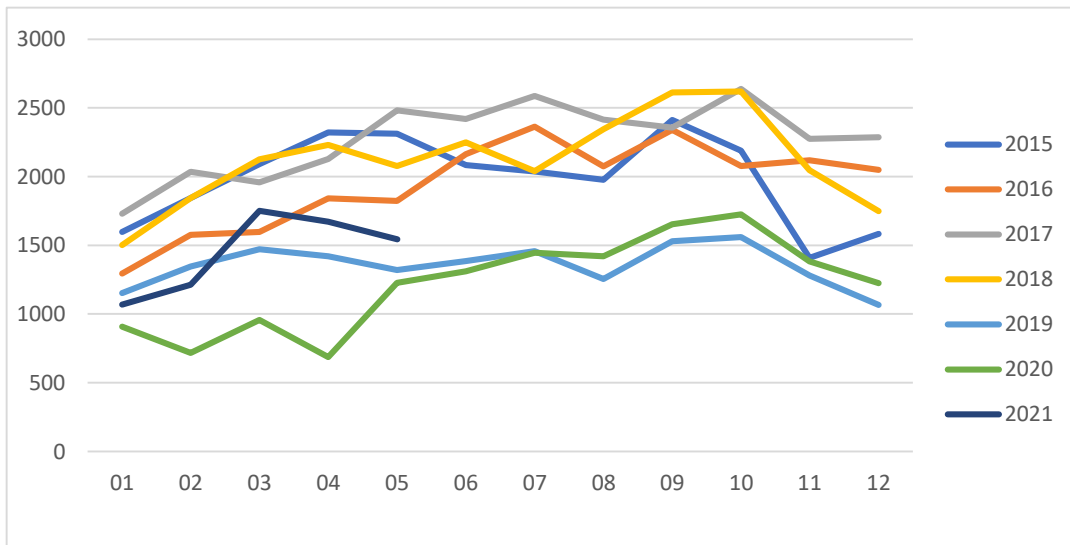
2WD Farm Tractors

May 2021

Copyright, AEM. All rights reserved. If data is referenced, please acknowledge AEM as the source.

Activity Shipments

Product	Size	Curren t Year	Last Year	%Chg	This YTD	Last YTD	%Chg YTD
2WD Farm Tractors							
	< 100 HP	845	857	-1.4%	4,259	3,047	39.8%
	100 < 180 HP	600	354	69.5%	2,577	1,356	90.0%
	180+ HP	99	16	518.8%	413	92	348.9%
Grand Total		1,544	1,227	25.8%	7,249	4,495	61.3%



The information for this report is provided monthly and is derived from AEM member companies through proprietary statistical reporting programs. The data is provided by AEM members and represents preliminary monthly wholesale and/or retail shipment sales of Ag equipment. Separate reports are available for the U.S., Canada, Russia, Brazil, and Latin America (exclude Brazil and Argentina). For more information, please visit: <https://www.aem.org/market-data/statistics/us-ag-tractor-andcombine-reports/>.

Attention Media: To speak with an AEM spokesperson about the data, please contact Sandra Mason at smason@aem.org.
 Restricted Information from the Association of Equipment Manufacturers.