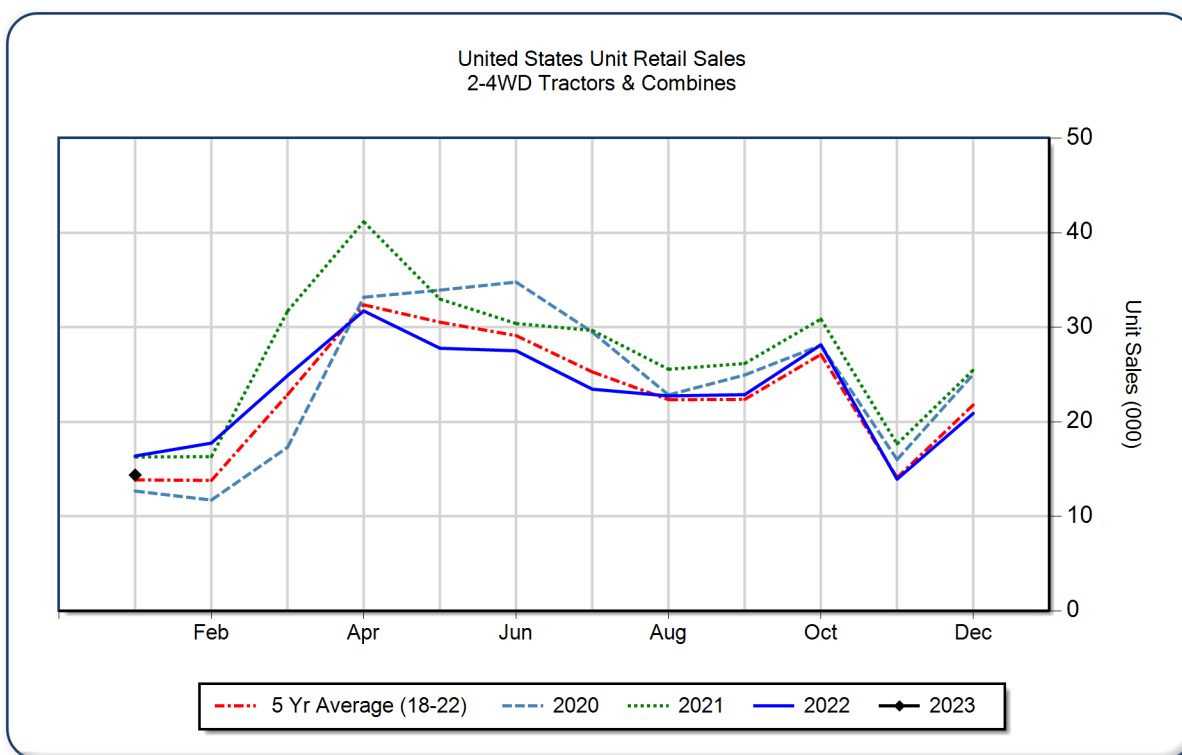


AEM United States Ag Tractor and Combine Report January 2023

Copyright, AEM. All rights reserved. If data is referenced, please acknowledge AEM as the source.

	January			YTD - January			Beginning Inventory Jan 2023
	2023	2022	%Chg	2023	2022	%Chg	
2WD Farm Tractors							
< 40 HP	8,023	10,396	-22.8	8,023	10,396	-22.8	94,525
40 < 100 HP	3,808	4,058	-6.2	3,808	4,058	-6.2	30,035
100+ HP	1,837	1,496	22.8	1,837	1,496	22.8	8,279
Total 2WD Farm Tractors	13,668	15,950	-14.3	13,668	15,950	-14.3	132,839
4WD Farm Tractors	219	224	-2.2	219	224	-2.2	406
Total Farm Tractors	13,887	16,174	-14.1	13,887	16,174	-14.1	133,245
Self-Prop Combines	477	205	132.7	477	205	132.7	1,080



The AEM Ag Tractor and Combine Report is provided monthly and is derived from AEM member companies through proprietary statistical reporting programs. The data is provided by AEM members and represents preliminary monthly retail sales of Ag equipment. Separate reports are available for the U.S., Canada and Russia. For more information, please visit: <https://www.aem.org/market-share-statistics/us-ag-tractor-and-combine-reports>. **Attention Media:** To speak with an AEM spokesperson about the data, please contact Sandra Mason at smason@aem.org.