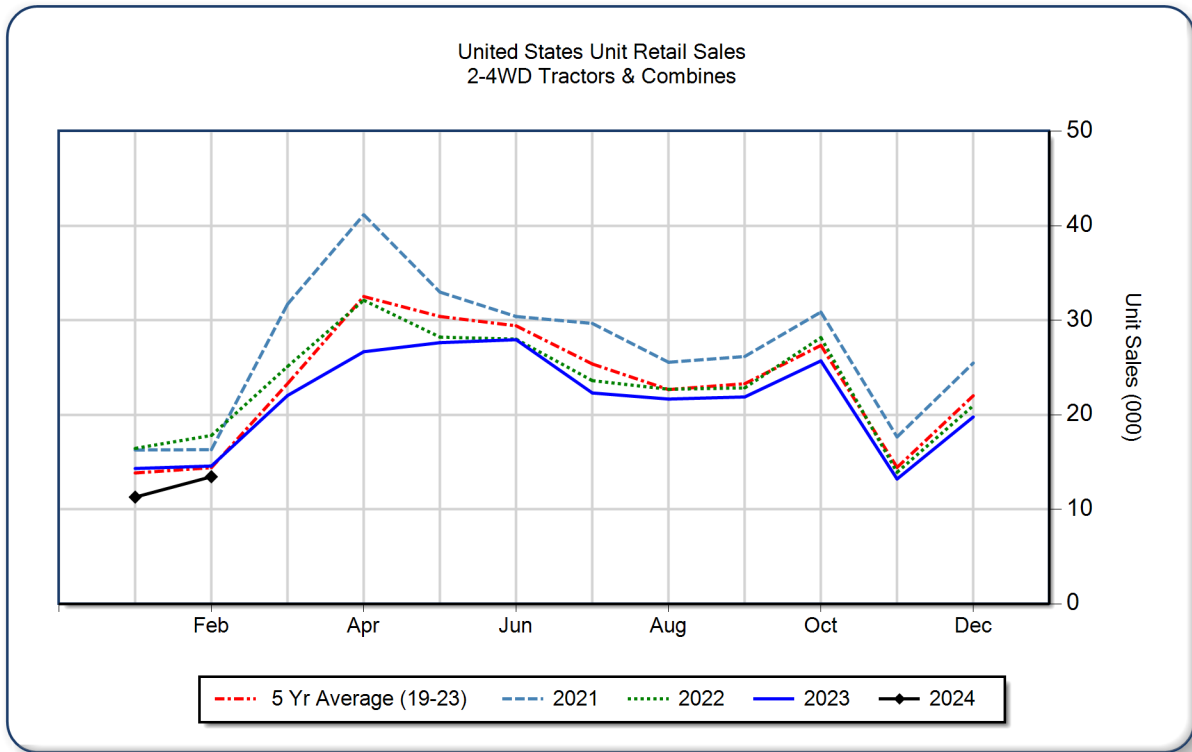


AEM United States Ag Tractor and Combine Report February 2024

Copyright, AEM. All rights reserved. If data is referenced, please acknowledge AEM as the source.

	February			YTD - February			Beginning Inventory Feb 2024
	2024	2023	%Chg	2024	2023	%Chg	
2WD Farm Tractors							
< 40 HP	7,843	8,760	-10.5	13,749	16,776	-18.0	94,854
40 < 100 HP	3,458	3,512	-1.5	6,652	7,283	-8.7	38,639
100+ HP	1,552	1,510	2.8	3,067	3,343	-8.3	10,894
Total 2WD Farm Tractors	12,853	13,782	-6.7	23,468	27,402	-14.4	144,387
4WD Farm Tractors	227	265	-14.3	448	483	-7.2	658
Total Farm Tractors	13,080	14,047	-6.9	23,916	27,885	-14.2	145,045
Self-Prop Combines	363	530	-31.5	814	1,004	-18.9	1,291



The AEM Ag Tractor and Combine Report is provided monthly and is derived from AEM member companies through proprietary statistical reporting programs. The data is provided by AEM members and represents preliminary monthly retail sales of Ag equipment. Separate reports are available for the U.S., Canada and Russia. For more information, please visit: <https://www.aem.org/market-share-statistics/us-ag-tractor-and-combine-reports>. **Attention Media:** To speak with an AEM spokesperson about the data, please contact Sandra Mason at smason@aem.org.